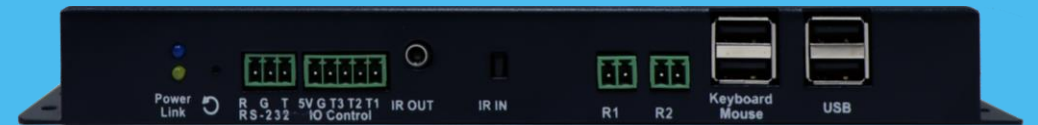


Networked AVoIP Solution

- VDM Series



Deployment of 1-to-1, 1-to-many, many-to-many, to hundreds of endpoints would be easy than ever.

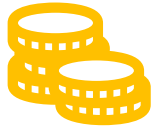




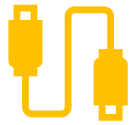
High functionality, ultra-low latency, scalability without limit

Extend, switch, and split your AV sources via a standard 1GB network

Why do you need VDM?



Highly Economical



Easy Plug-and-Play with 4K Image Quality



High Flexibility & Scalability



Quick Installation & Fewer Cables Needed

VDM Features



Any Type of AV Structure

- ✓ 1-to-1, 1-to-many, many-to-many
- ✓ Supports horizontal / vertical display
- ✓ 100M transmission distance for each endpoint



Any Type of AV Signals

- ✓ Supports 4K
- ✓ Supports SFP
- ✓ Scaler for high compatibility with various display devices



Various Applications

- ✓ TV walls
- ✓ Multiview display
- ✓ KVM solutions

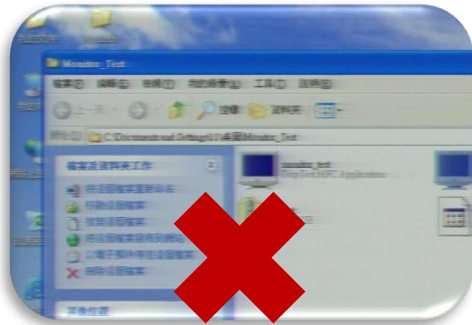


Effortless Management

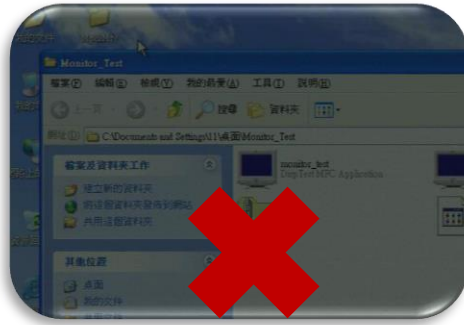
- ✓ Web GUI control
- ✓ Intuitive drag-and-drop
- ✓ Easy configuration & preview mode
- ✓ IT-friendly

VDM Delivers High-quality Image for You

- **Crystal-clear video quality with stable image:** avoid fragment, over/under exposure, offset, and other noises.



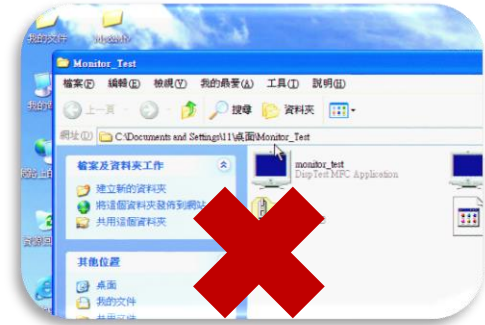
blurred



under-exposed



fragment



over-exposed

- **HDMI high-quality transmission without distance limit:** supports 4K2K resolution. No signal attenuation and distortion.

Easy Deployment & Installation

- **Flexible deployment with unlimited scalability:** find your best network structure with 1-to-1, 1-to-many, many-to-many, to hundreds of endpoints.
- **No complex setup:** via only the network switch, you can easily construct an AVoIP system without extra video devices (such as matrix switch, distributor, video wall processor, extender, etc.) VDM offers you quick and easy installation.

VDM-4010 4K Over IP Matrix Encoder



Supports Various Full HD Video Signals

480i 720p, 1080i 1080p, 4K

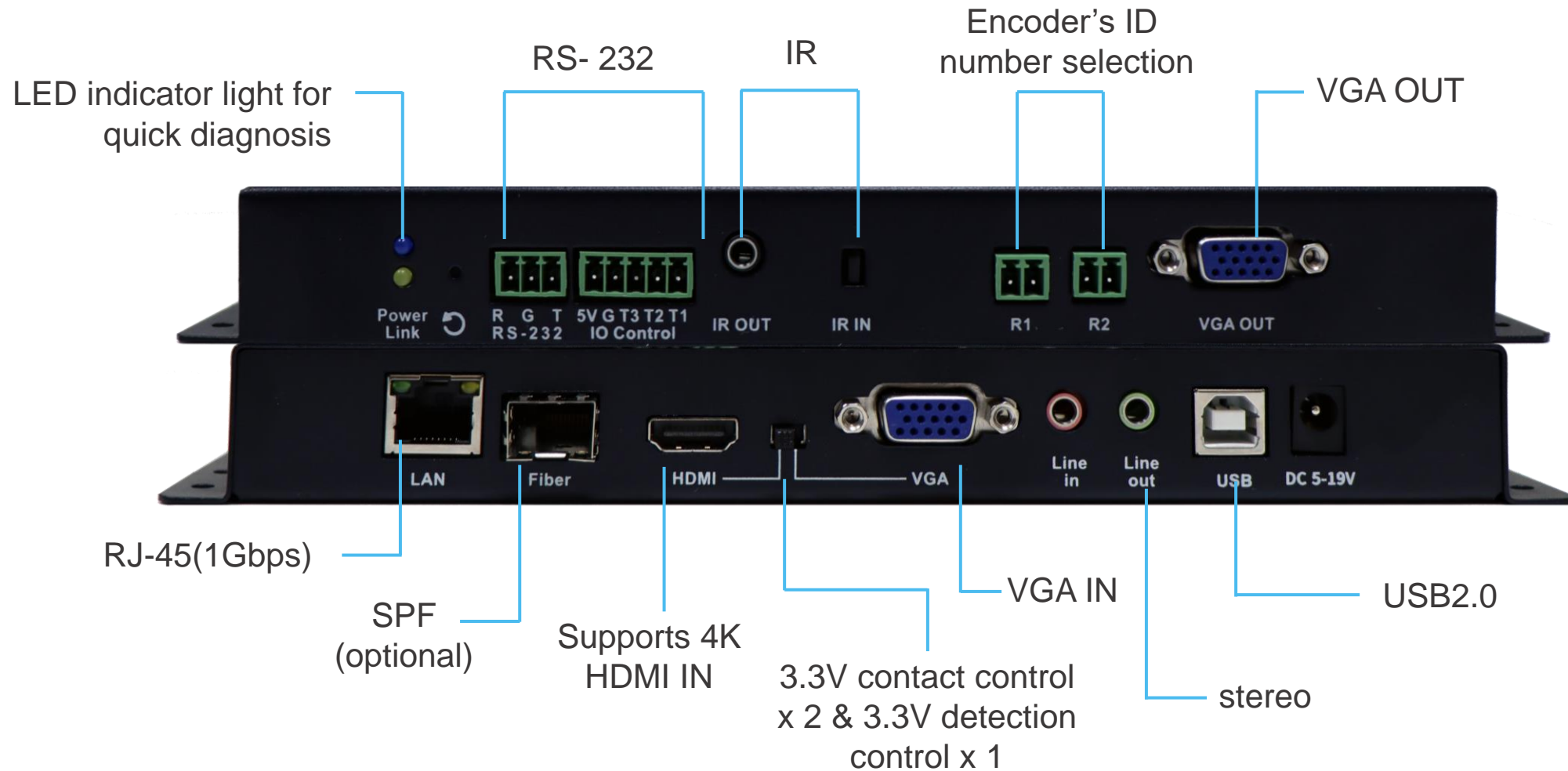
VGA & HDMI Inputs

You can make the system auto-detect the input source or set DIP switch for the video input.

IR & RS-232 Bi-directional Transmission

Integration with central control system to manage the devices of every endpoint.

VDM-4010 Connectors



VDM-4020 4K Over IP Matrix Decoder

High-resolution HDMI Output

4K HDMI output with scaler. It supports over 10 types of video resolution, which is highly compatible with various display equipment.

Supports USB2.0

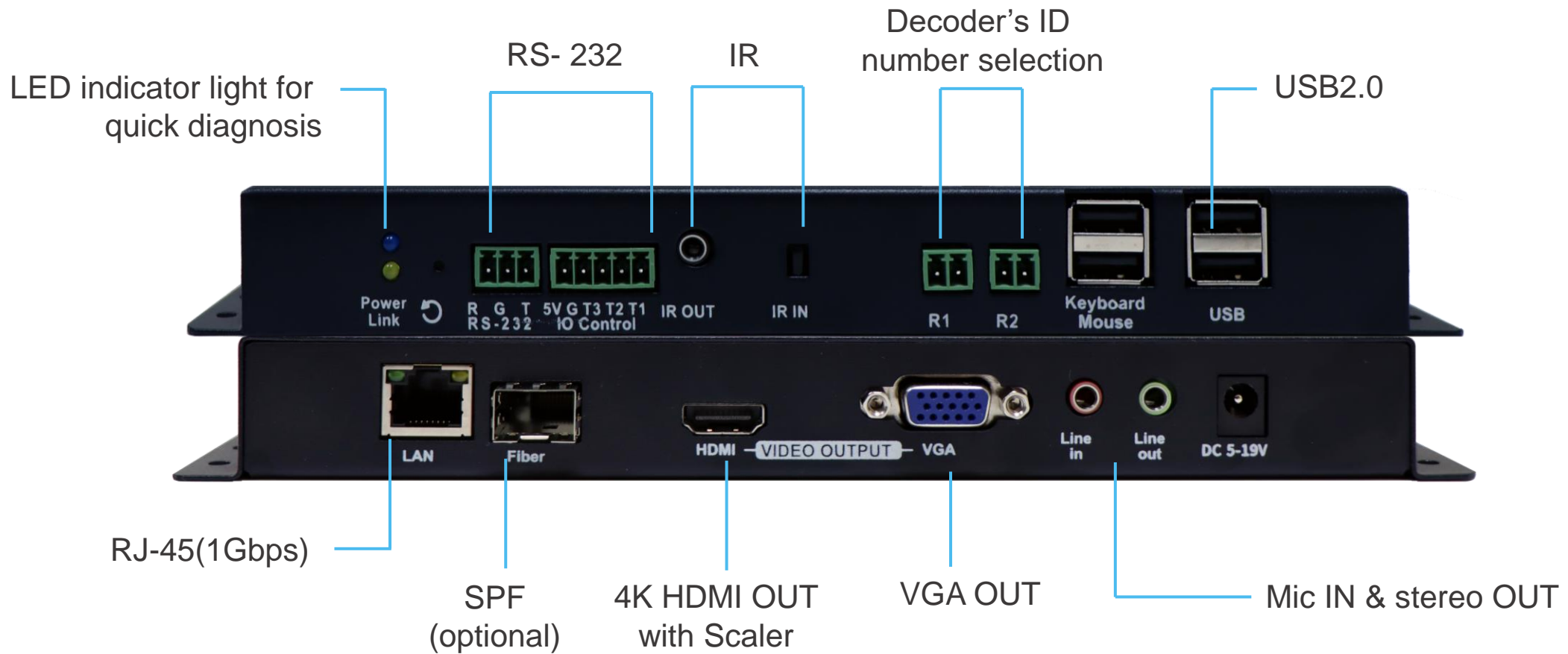
You can connect mouse, keyboard, ID reader, PC/tablet, printer, and other USB peripherals.

IR & RS-232 Bi-directional Transmission

Integration with central control system to manage the devices of every endpoint.



VDM-4020 Connectors



VDM-4010/4020 Spec

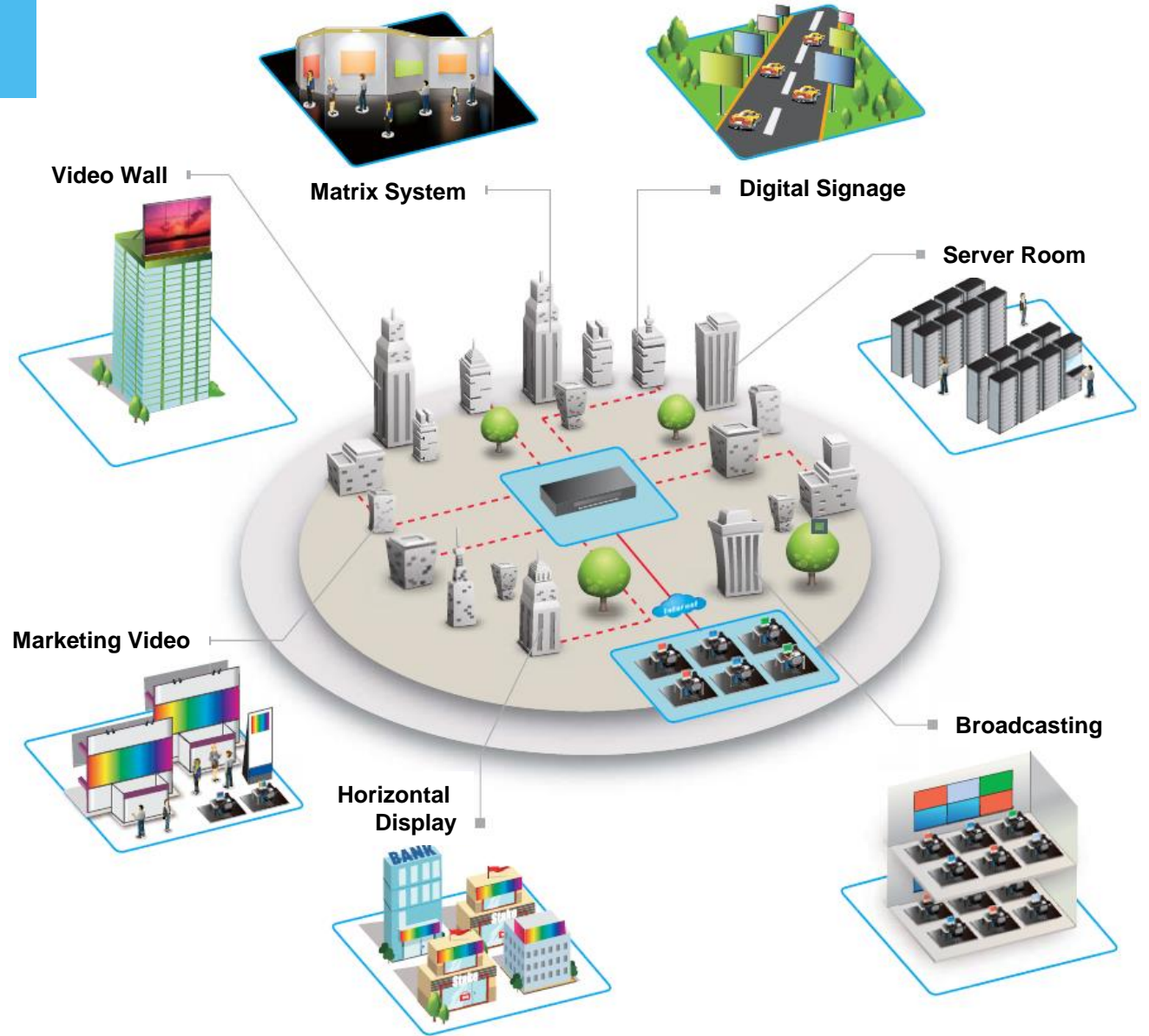
Hardware	VDM-4010	VDM-4020
Video Compliance	HDCP 1.4	HDCP 1.4
HDMI (Type A)	IN x 1	OUT x 1
VGA (D-SUB)	IN x 1, OUT x 1	OUT x 1
Audio	3.5mm OUT x 1 3.5mm IN x 1	3.5mm OUT x 1 3.5mm IN x 1
LAN	RJ45 x 1	RJ45 x 1
Fiber Uplink	SFP x 1	SFP x 1
USB Control	Type B x 1	Type A x 4
IR Receiver	LED x 1	LED x 1
IR Control	3.5mm x 1	3.5mm x 1
RS-232	3P Euro terminal	3P Euro terminal
5V Output	2P Euro terminal	2P Euro terminal
3.3V Control	3P Euro terminal	3P Euro terminal
Power Input	DC 5~19V	DC 5~19V

Physical Spec	VDM-4010	VDM-4020
Dimensions (WHD)	238 x 26 x 108 (mm)	238 x 26 x 108 (mm)
Weight	556.5g	556.5g
Storage Temperature	-20°C~+60°C	-20°C~+60°C
Operation Temperature	0°C~+50°C	0°C~+50°C

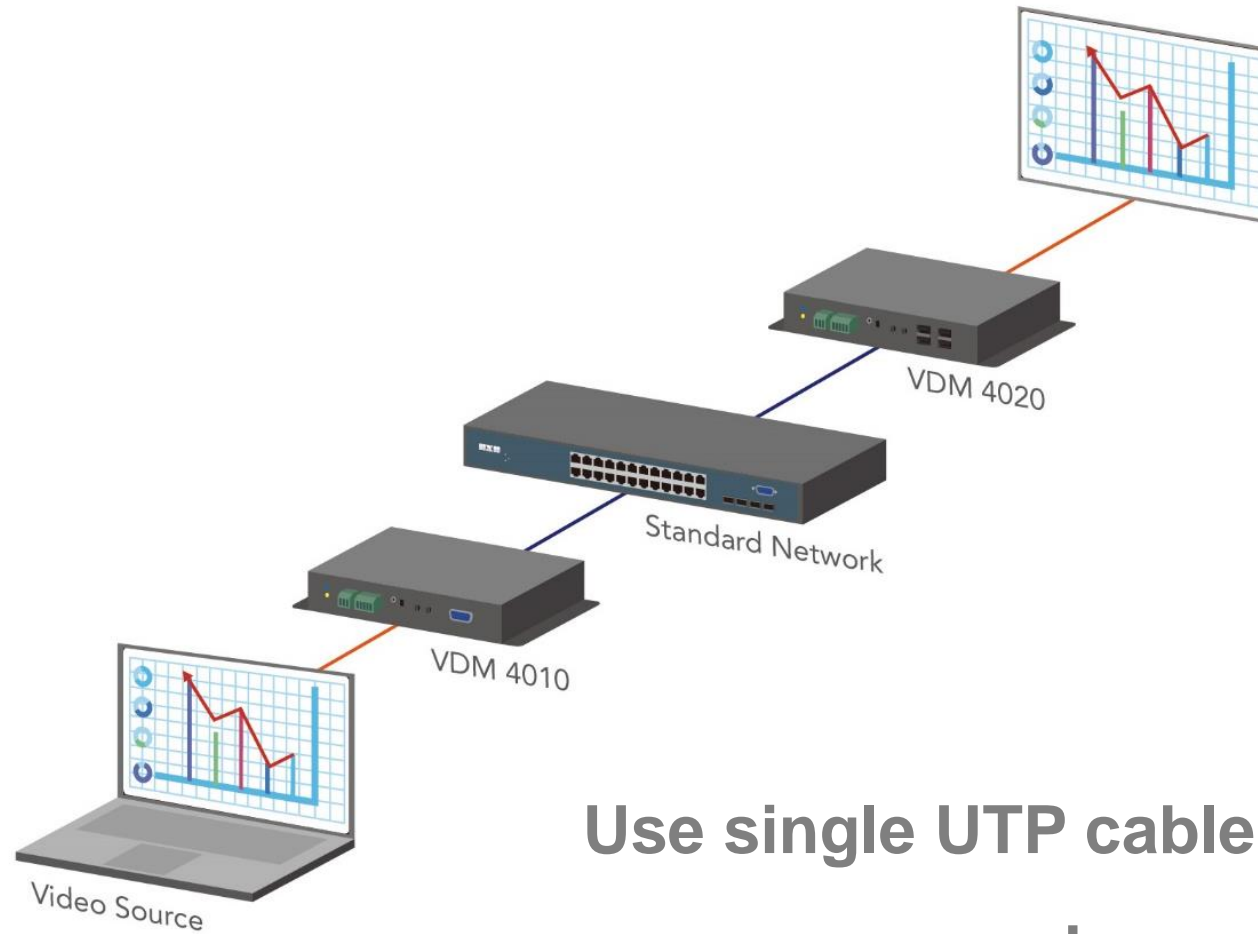
Power Supply	VDM-4010	VDM-4020
External Power Supply	AC 100~240V	AC 100~240V
Frequency	50~60Hz	50~60Hz
Consumption	DC 12V	DC 12V

VDM Applications

VDM can be applied for video broadcasting, digital signage, video playback on the tradeshow, distributed AV display for marketing, timetable display for transportation, department store, high-way broadcasting, command centers, campus broadcasting, server room, and more.



1-to-1 Structure



Use single UTP cable connecting with PC
and server for remote control

1-to-Many Structure

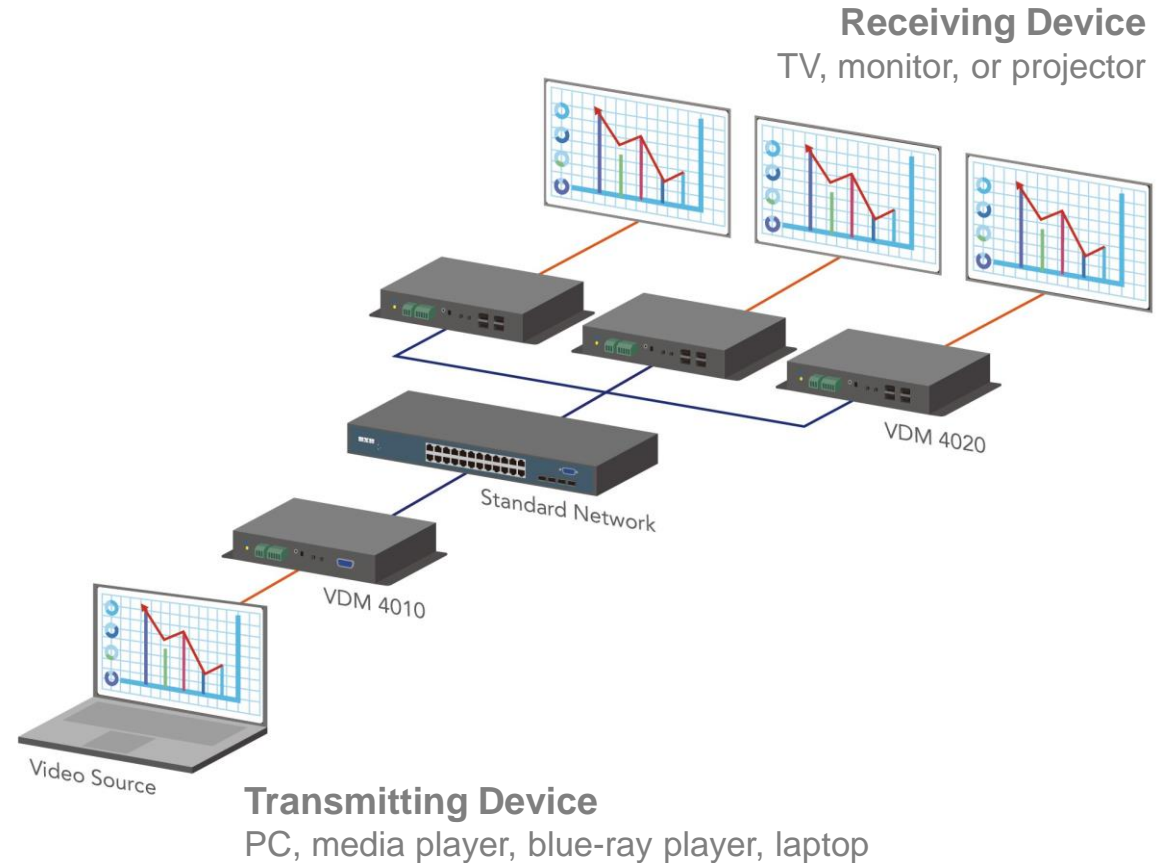
Extend one screen's image to more endpoints.

Places: supermarkets, shopping malls, electronic appliance shops

Deployment: Cat5E/Cat6 cables connect the transmitting devices with remote receiving devices via LAN switch. The distance of each endpoint can reach 100M.

Benefits

1. Transmitting AV signal to other places at once, making message announcement and marketing more effective.
2. The image display of the local and remote is simultaneous.
3. Easy scalability. You don't need to replace the original equipment.



Many-to-Many Structure

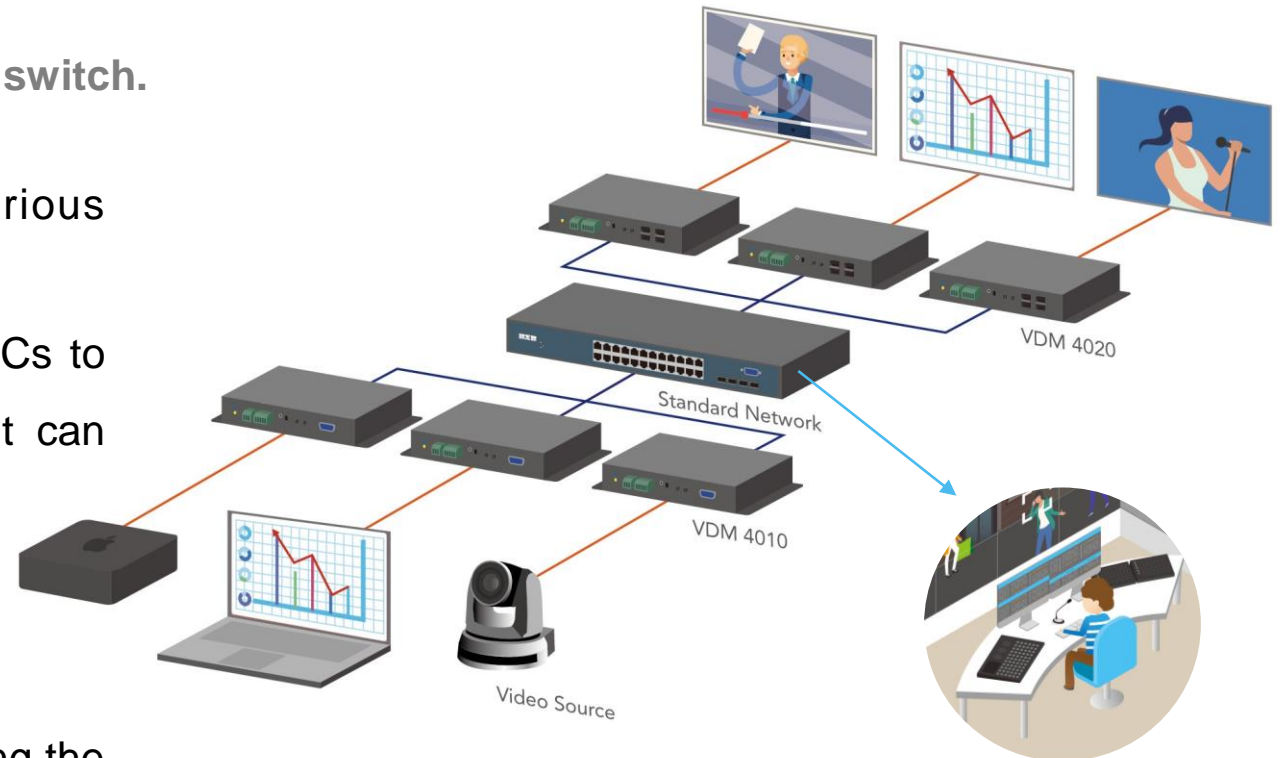
Deliver different images to different places for matrix switch.

Places: train stations, MRT stations, airports, various transportation centers

Deployment: transmit different AV signals of multiple PCs to many monitors/projectors. The distribution management can be operated via the central control system.

Benefits

1. Multiple videos transmission for easy broadcasting.
2. Control multiple AV signals at the same time, simplifying the management and enhancing the efficacy.
3. Transmitting the same/different AV signals to other places at once, making message announcement and marketing more effective.



Control Room

Control the transmission of the video source and the condition of all the devices

TV Wall Application

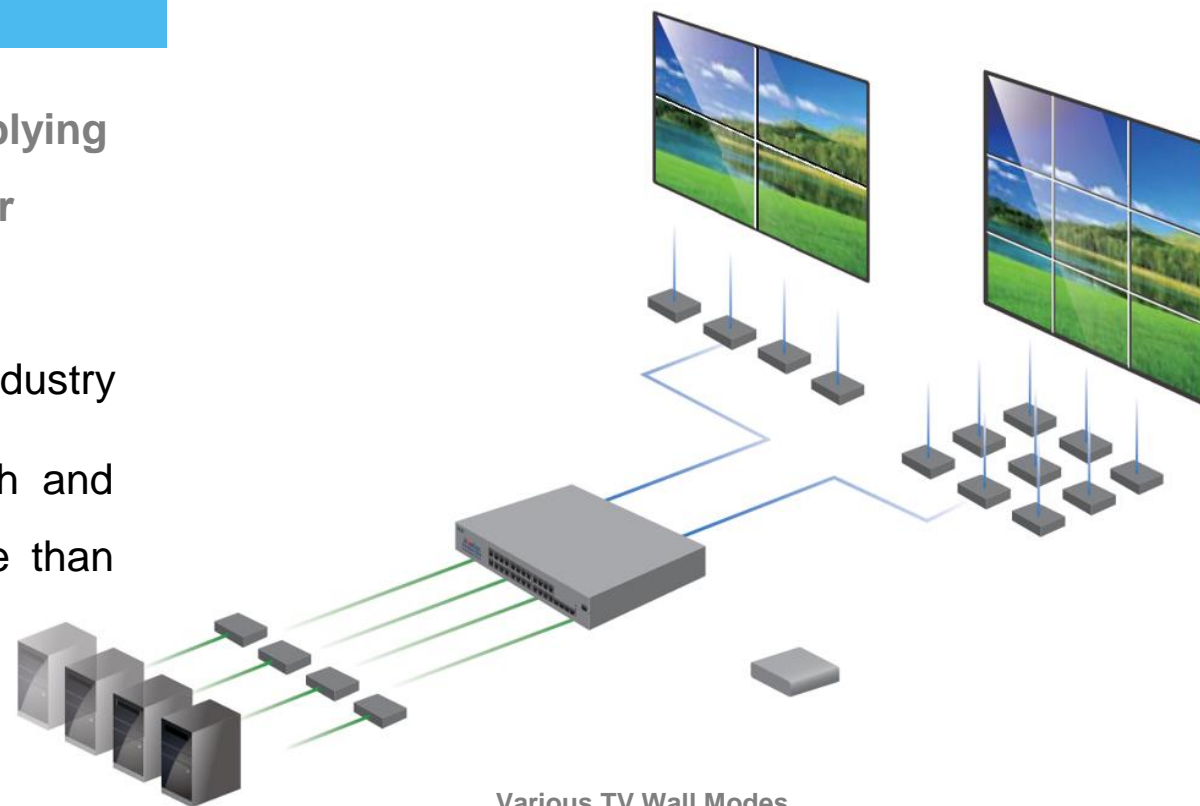
TV wall structure is complex and with high cost. By applying BXB's VDM series, the installation would become easier than ever.

Places: exhibition halls, business building, entertainment industry

Deployment: via IP structure, you can do matrix switch and monitor frame offset, which is more flexible and scalable than installing the traditional TV wall.

Benefits

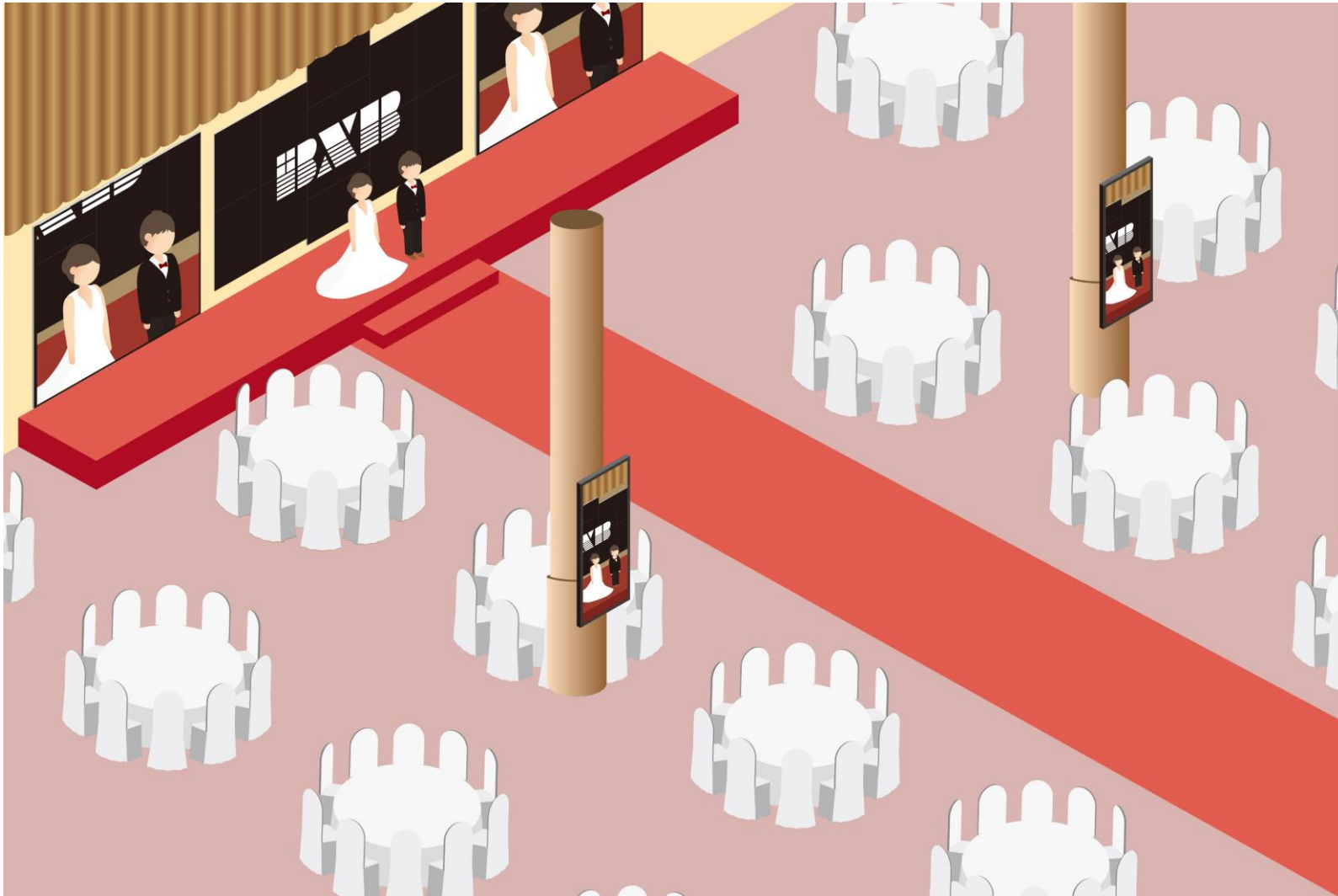
1. You can select TV's size & quantity as well as put together the TVs as you wish.
2. Offer outstanding quality of image.
3. The construction cost is lower than which of the traditional TV wall.



Various TV Wall Modes



Ball Room



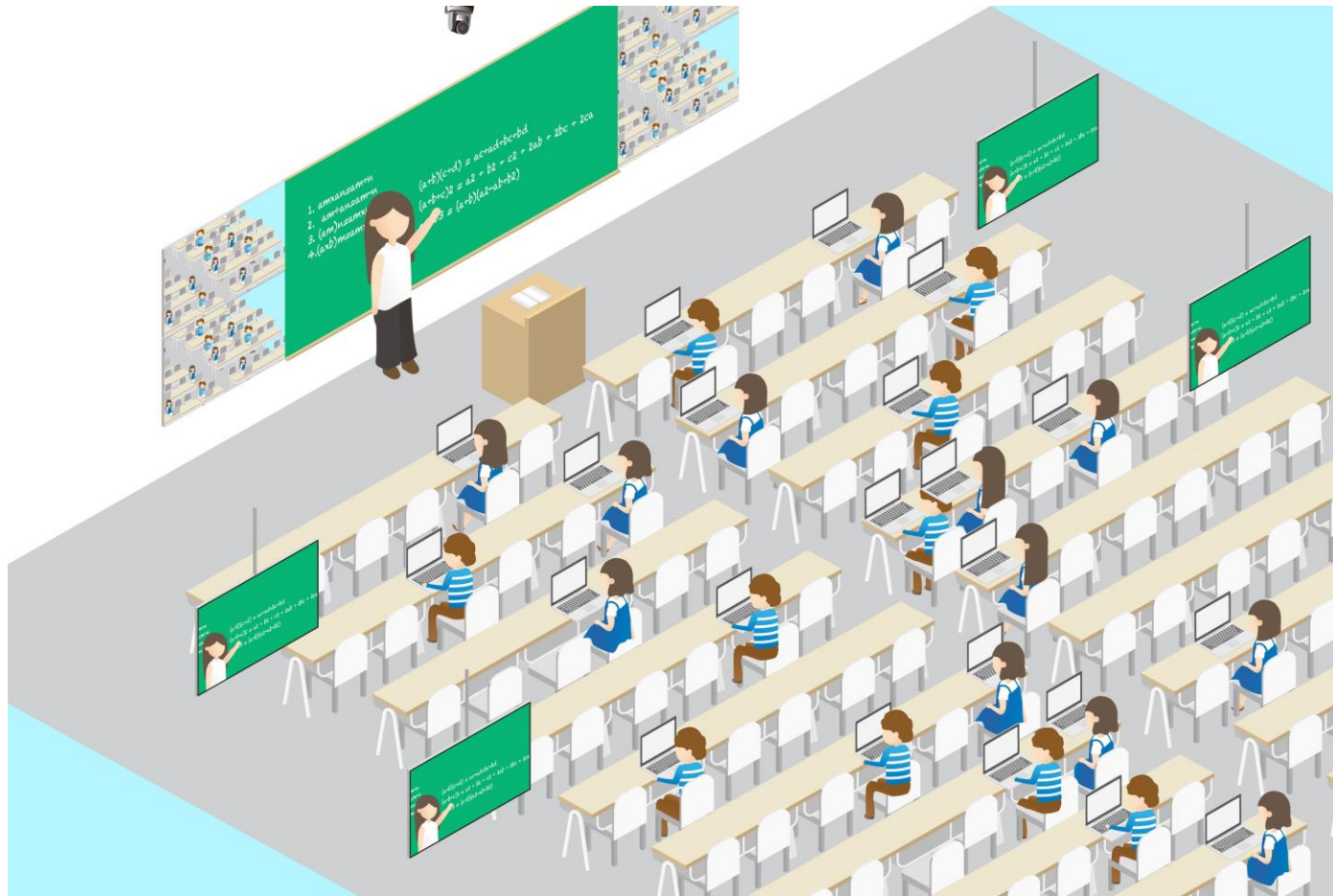
Distribute videos to each monitor in the room for seminars, banquets, and promotion. Eye-catching displays for live events at any angle of the room.

Airports/Train Stations



Transmit messages to different zones for delivering instant and accurate boarding information. These messages can all be controlled via BXB centralized management software.

Classrooms/Seminar Rooms



Working with the Full HD camera, the system can capture the teaching condition and then transmit the image to other classrooms, reaching the purpose of large-scale remote teaching.

The multimedia messages can be distributed to each digital signage of the learning field, including classrooms, offices, student cafeteria, playground, and corridors. BXB VDM series helps you construct an informative and interactive learning environment.

Control Rooms/Command Centers



Seamlessly integrate video auto-tracking system, video wall, and intelligent system. The administrator can instantly control, monitor, manage, and command via BXB's web GUI. You can also integrate KVM matrix equipment for remote control. BXB's VDM series enhances the efficacy and speed of control room's operation.

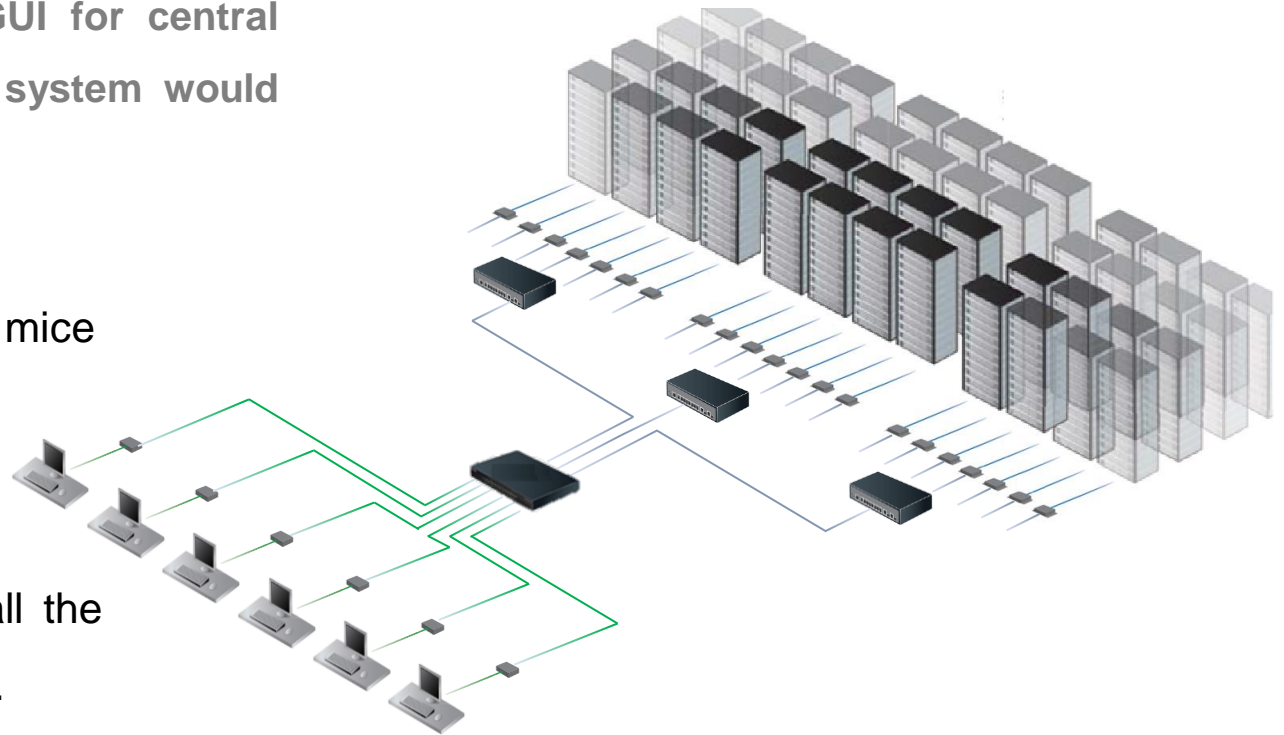
Server Room

Efficacy, reliability, and safety are the main requirements to server room management. BXB's VDM system offers Web-based GUI for central control. If there's any device being out of work, the system would report the unusual condition right away.

Deployment: multiple sets of monitors, keyboard, and mice control many servers via LAN network.

Benefits

1. The administrator can easily integrate and control all the devices of the transmitting points and receiving points.
2. Servers with different brands can still connect to the transmitting point. It's compatible with other equipment and effectively simplifying IT management.





BXB Successful Cases





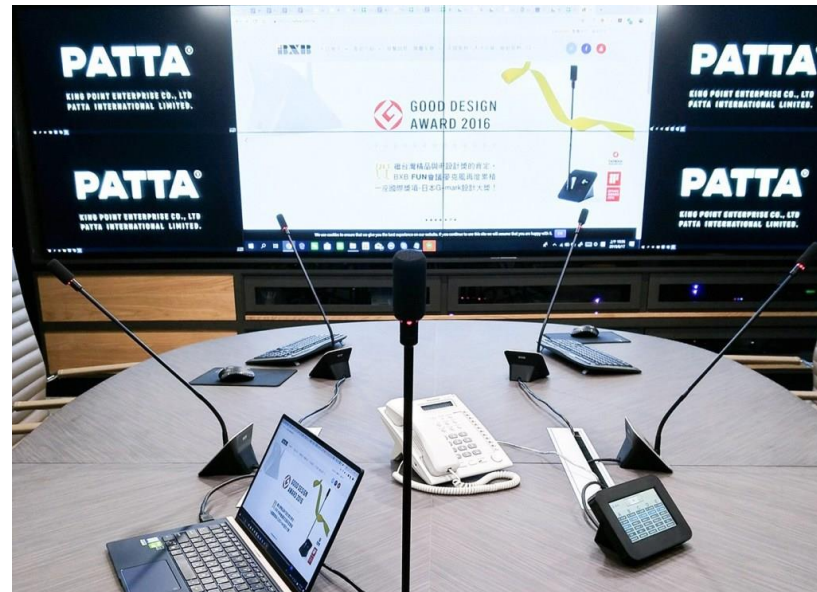
In this case, VDM is integrated with BXB's paperless conference system. Via the HDMI IN port on the flush-mounted panel, attendees can just one-click for projecting the image on the laptop to the main screen of the meeting room.



**Maple-tek,
Taiwan**



There're two large-scale and medium-scale meeting rooms with TV wall (4 x 2 & 2 x 4) to enhance the meeting efficiency. The system is also integrated with BXB's HDR-731 Streaming Media Processor, constructing a meeting room for recording and live streaming the company training/seminars.



PATTA
International Ltd.,
Taiwan



Via the HDMI IN port on the flush-mounted panel, attendees can just one-click for projecting the image on the laptop to the main screen of the meeting room. Besides, the system integrates with Polycom for remote meeting. Via VDM software, the user can auto-switch the meeting mode.



One-click for projecting the slide

NAE Technologies, Inc., Taiwan





BXB's VDM solution supports 4K resolution, presenting the best image quality. The video seamless switch can be perfectly done under IP distributed matrix structure. The guests don't need to wait for the video switch.

Royal Hotel, Taiwan





Visit website to get more information

www.bxb.tw/en



Youtube



Facebook